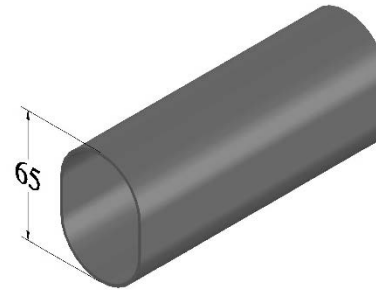


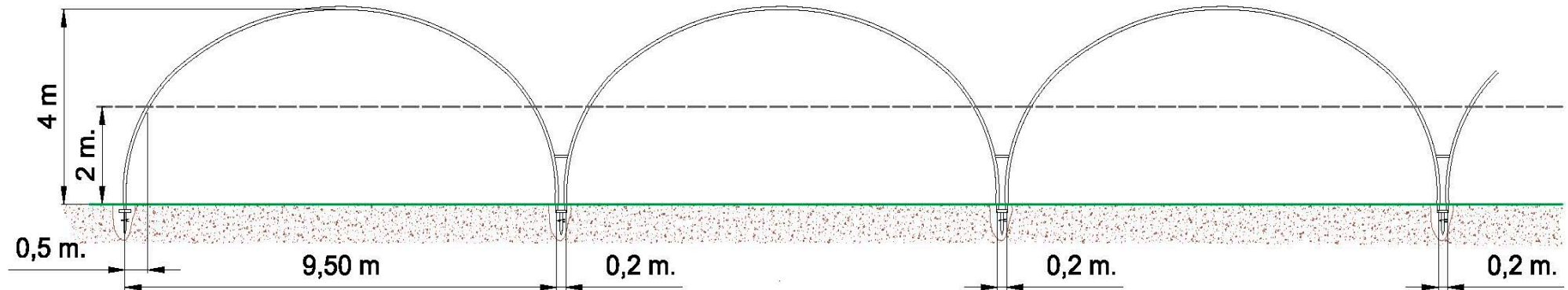
SMARTTUNEL ASTHOR for crop protection, berries, leaves, flowers, ornamentals, nurseries

**GROWING
GREEN PROFITS**
in more than
countries **65**

- **More resistant (20% more than the Ø60 tube)**
- **Improved working space**
- **Easier to install**
- **Optimum crop conditions**



SMARTTUNEL ASTHOR for crop protection, berries, leaves, flowers, ornamentals, nurseries...




- Easy and quick to install
- Fixation to the ground using propellers without foundation.
- 65 OVAL tube arch (20% more resistant than the Ø60 tube)
- Width 9,5 m and 8,5 m
- Height 4 m
- Separation between arches 2, 2,5 and 3 m

OPTIONAL

- Closed front walls with mesh or plastic film with rolling up curtains operated by motors or manual gears.
- Gutters for rainwater
- Possibility to hang crops from the structure

 **ASTHOR**
Polígono de Somonte,
c/ M. G. "La Pondala", 41
C.P.33393 Gijón. Asturias.

 +34 985 303 752

Invernaderos@asthor.com / www.asthor.com